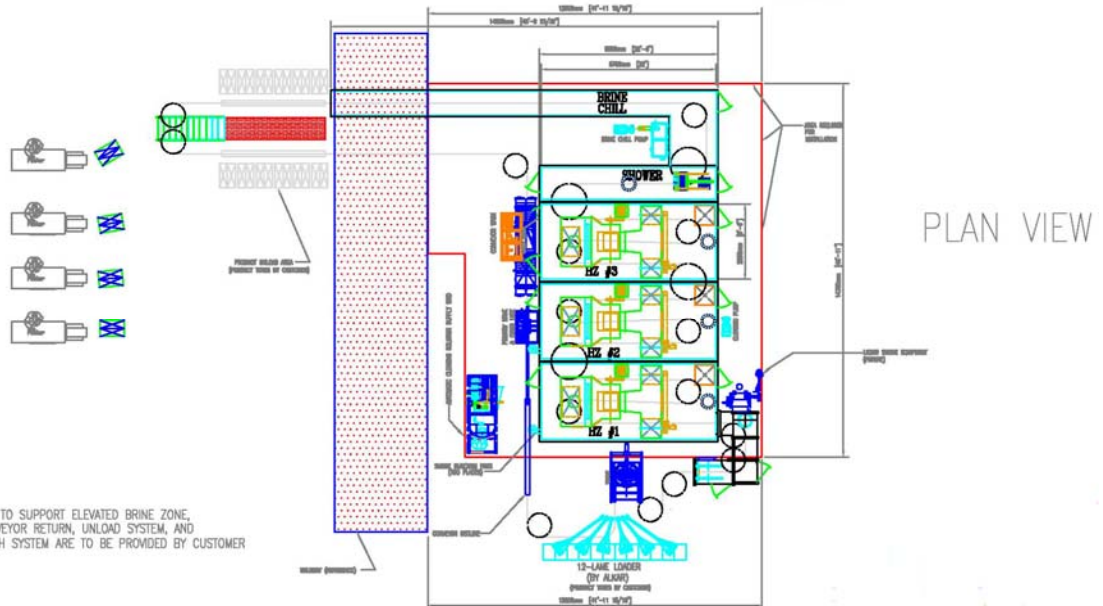
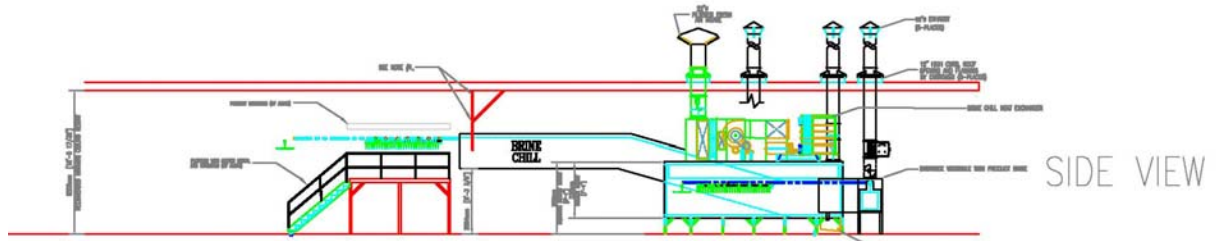
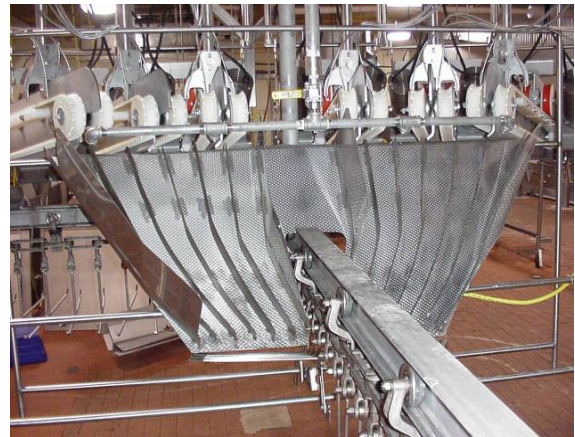


# ALKAR T-Con CPS



NOTES  
 1. STRUCTURES TO SUPPORT ELEVATED BRINE ZONE, EXTERNAL CONVEYOR RETURN, UNLOAD SYSTEM, AND CONVEYOR WASH SYSTEM ARE TO BE PROVIDED BY CUSTOMER

# ALKAR T-Con CPS

- **All-welded** process cabinet construction for durability and sanitation.
- **Brine chill** – Provides efficient product cooling, eliminates product shrink, and improves product peelability.
- **Chain/yoke wash system** to continuously wash the chain and yokes (T-bars) prior to their return to the loading system.
- **Chain lubrication system** to continuously lubricate the chain after cleaning.
- **Cold shower tunnel** will use non-recirculated cold water to initiate the product cooling process.
- **Components** as complete modular assemblies to minimize assembly time and assure proper assembly.
- **Computer-based HMI control** to allow simple and reliable operation, clear diagnostics, and complete process documentation.
- **Ergonomic loading and unloading** to minimize labor, operator effort.
- **Flexible Layout:**
  - Densely loaded zones, horizontal Serpentine product flow
  - Orient zones in different directions
  - Pre-rinse and secondary liquid smoke zones
- **Fully-supported conveyor system** to minimize chain stresses and maximize chain life.
- **Heat zones** with independent, modulating temperature and humidity control.
- **Individual process zones** are constructed to adapt easily to existing plant floor space.
- **Recirculated or Non-recirculated CIP** semi-automatic cleaning systems, controlled by T-Con's computer-based control system.
- **Serpentine product flow** to maximize process uniformity, minimize space requirements, and allow flexible arrangement of process cabinets.
- **Stainless-steel construction** for corrosion protection and sanitary operation. Super austenitic 6Moly stainless steel inside heat zones for enhanced corrosion resistance.