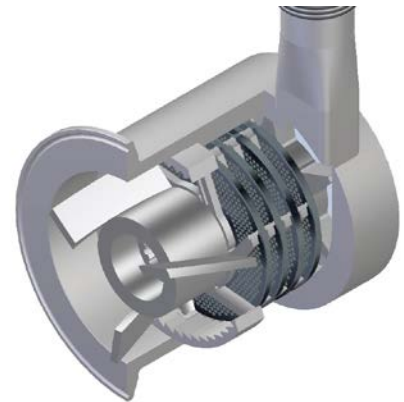


## VERSAMILL 5 EMULSION SYSTEM

- Equipped with 280 liter (10 ft<sup>3</sup>) gravity feed hopper or force feed with pump
- 3.5 metric ton (8000 lbs/hour) output rate for lower volume producers.
- Simple design allows quick assembly in less than 5 minutes.
- Coarse, fine or ultrafine emulsions possible with a wide variety of plate and knife options.
- 125 mm (5") plate size, with hole plates ranging from 0.8 mm to 10.0 mm
- Variable mill speeds from 300-2700 RPM
- Central spring knife tension system gives constant knife tension for better cutting action and requires no adjustments during production
- Mill outlet equipped with RTD temperature probe
- USDA accepted and CE approved. Built in conformity with AMI sanitary equipment design principles.






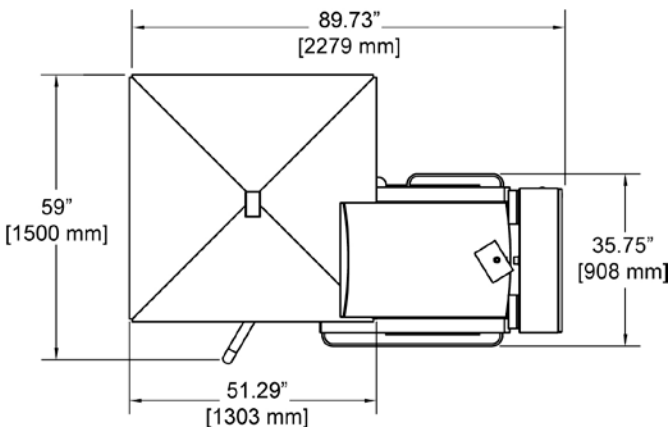
*Cutting head holds from  
2 to 4 knife sets*

# VERSAMILL 5 EMULSION SYSTEM

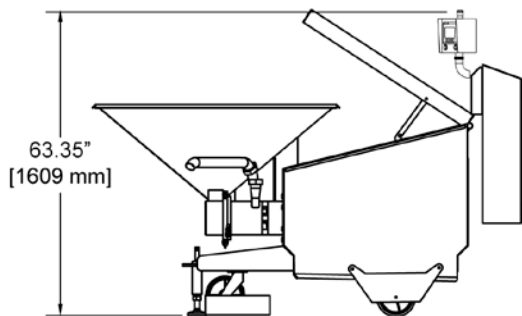
Cozzini introduces the new Versamill 5 emulsion system for lower-volume producers. Utilizing 3 completely different cutting systems for various product applications, this compact and simple mill can be used to produce a multitude of emulsion products from coarse to ultrafine. Just like the larger systems from Cozzini, the Versamill offers multiple plate and knife combinations and speed control for optimal results with a minimal footprint in your production line.

## Knifaset Options Available for Versamill 5:

Standard Plate & Knife	Radial Cut	Ring Knife
		
<ul style="list-style-type: none"> <li>• Coarse and fine emulsions</li> <li>• 3 or 6 cutting edges per knife for up to 113,000 cuts per minute.</li> <li>• Cutting edge can be resurfaced with standard plate grinder</li> <li>• Optional gristle ring for products with connective tissue</li> </ul>	<ul style="list-style-type: none"> <li>• Fine and Ultra-fine emulsions</li> <li>• 6, 12 or 16 cutting edges per knife plate for up to 300,000 cuts per minute.</li> <li>• Double cuts for each knife, cuts front and back of knife</li> <li>• Reversible knife plate usable on both sides</li> <li>• Resurface cutting edges with standard plate grinder</li> </ul>	<ul style="list-style-type: none"> <li>• Coarse and fine emulsions</li> <li>• Propeller knife transfers product from one plate to the next</li> <li>• Up to 113,000 cuts per minute.</li> <li>• Dual cutting action knife design</li> <li>• Reversible knife doubles part life before resurfacing</li> <li>• Resurface cutting edges with standard plate grinder</li> </ul>



<b>Versamill 5 EMULSION SYSTEM</b>		
<b>Voltage</b>	<b>Hp/kW</b>	<b>Service Amps</b>
380 V or 460 V	50 hp (37 kW)	100 A
	75 hp (55 kW)	125 A



03/18 E