

# Hot Dog Packaging



**The best retail packages on the shelf are made on RapidPak machines:**

- Contour forming inserts and superior vacuum result in tighter packages
- Patented Servo drives provide consistent, reliable speeds faster than loaders
- Superior sanitary design and new CIP option ensures easier cleaning and inspection



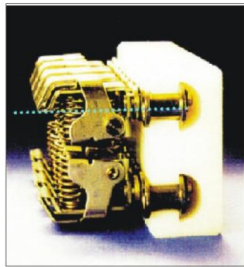
2 across by 4 up die layout ensures optimal vacuum and speed

# Hot Dog Packaging

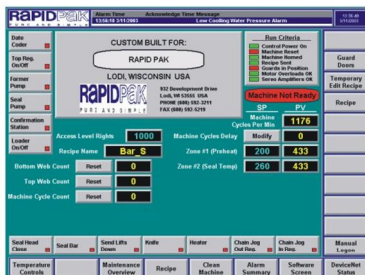


Custom "Scalloped" inserts provide the most attractive retail packages:

- No product nesting
- Wrinkle-free packages
- Tight packages reduce purge



Long-life chain keeps film tight, and supports heavy product



Allen Bradley CompactLogix touchscreen logistics

## Sanitary Design

- Dairy 3A, 23-05 certified since 1992
- CIP cleaning system
- Open and accessible

## High-Speed Capacity

- Patented Servo motor control
- 200 packages per minute

## Allen Bradley Controls

- User-friendly graphics, easy operation, faster trouble-shooting, and detailed reports
- Easily understood CompactLogix programming
- Ethernet I/O reduces machine wiring

## Easier Maintenance

- Touchscreen diagnostics
- 24/7 modem service
- Open accessible design

## Low Operating Cost

- Less than 5 cfm compressed air
- Heavy-duty, low-wear gripper chain design
- Simple design; fewer moving parts

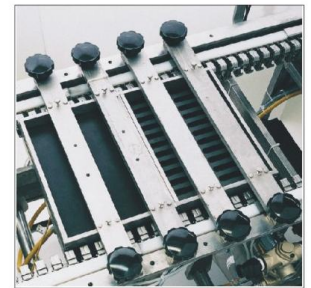
## Convenient Parts Sourcing

- Common industrial components
- Original identification
- On-line parts ordering; [www.rapidpak.com](http://www.rapidpak.com)

Machine Direction →  
Film



Heater located below film prior to forming die provides faster cycle rate and better forming



Independent preheat provides sanitary, wrinkle-free forming



Patented Servo drives are faster and more precise