

RapidPak RP-90



Most Advanced Sanitary Design in the Packaging Industry

- Enhances access and cleanability; reduces food safety concerns
- Dairy 3A sanitation standard compliance
- Potential for lower swab counts and longer shelf life



Exceptionally High Cycle Rates Through the Use of Servo Motor Technology

- Replaces two competitive machines with one RapidPak

Mechanical Simplicity; Fewer Moving Parts

- Reduces downtime, maintenance costs, and part costs
- Reduces the need for trained expert personnel



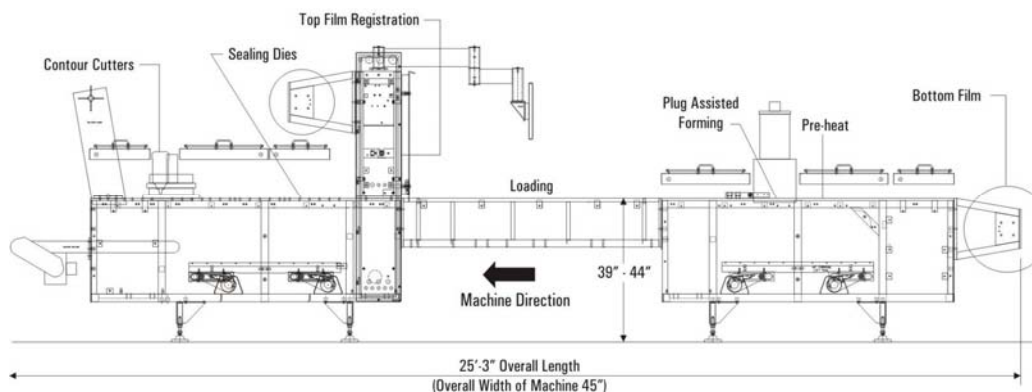
Readily Available Parts and Components

- Fewer consumables; lower usage cost improves purchase justification
- Industry standard, off-the-shelf components



Allen Bradley CompactLogix System and Modem

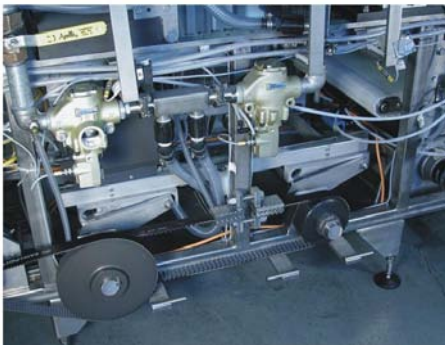
- Faster, easier maintenance
- 24/7 modem service



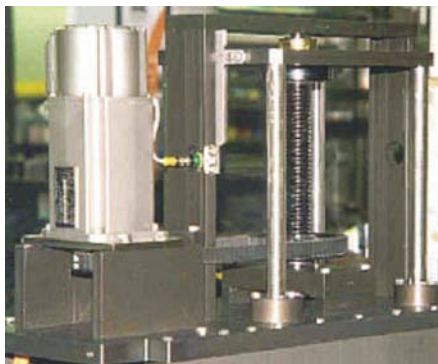
RapidPak RP-90



Sanitary Tubular Frame



Servo-Driven Die Closing Lift System



Servo-Driven Plug Assist Forming



Allen Bradley
PanelView Plus Touchscreen

SPECIFICATIONS:

- Up to 9.0" (228.6mm) depth of draw.
- Up to 30" (762 mm) index.
- Flexible or rigid film.
- Custom frame welded and machined to ± 0.001 " tolerance ensures consistent, long-term performance and reduces parts wear.
- Guards remain on machine:
 - Eliminates handling
 - Easy-open access
- Servo motors on all major machine functions. Continual feedback allows Servos to move faster, smoother, and more accurate in pneumatic systems.



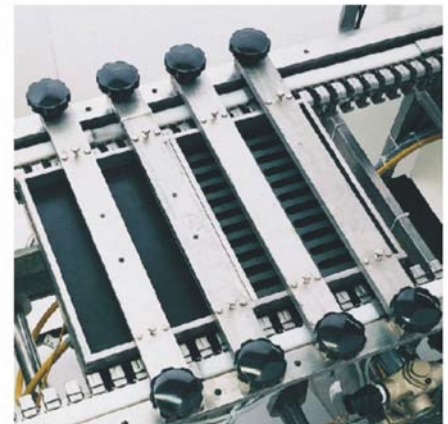
- Separate pre-heat is more hygienic, maximizes heating and forming times, and allows faster cycle rates.
- Servo Controlled Plug Assist produces superior forming using thinner films without losing barrier properties.
- Individually driven shape cutting heads only cut filled packages:
 - Eliminates jams and waste
 - Provides trend reports
- Remote electrical panel and NEMA 4 watertight components ensure reliable start-up after aggressive cleaning.
- Easily sourced parts; lower annual cost.

UTILITIES

- Electrical: 230/3/60. Amperage to be determined once machine is configured.
- Compressed Air: Typically 2-3 cfm, 80-90 psi
- Water: 30-50 gallons per hour at 10-50 psi



Sanitary Tilt-Away Guards



Pre-Heat Forming System



Shape Cutting



Convenient Parts Sourcing